

# Effects of peatland drainage and warming on dissolved organic carbon quality and quantity

**Evan Kane<sup>1,2</sup>, John Hribljan<sup>1,2</sup>, Merritt Turetsky<sup>3</sup>,  
Rod Chimner<sup>1</sup>**

<sup>1</sup> Michigan Tech. University, SFRES

<sup>2</sup> U.S. Forest Service, Northern Research Station

<sup>3</sup> University of Guelph, Department of Integrative Biology

# **Collaborators:**

## **Dissolved Export in Wetlands and Streams:**

**Lynn Mazzoleni, Tom Pypker, Robert Stottlemeyer, Amy Marcarelli, Jon O'Donnell, Mike Waddington, Kim Wickland, George Aiken, Dave Krabbenhoft**



**I Change in porewater DOC with warming:**

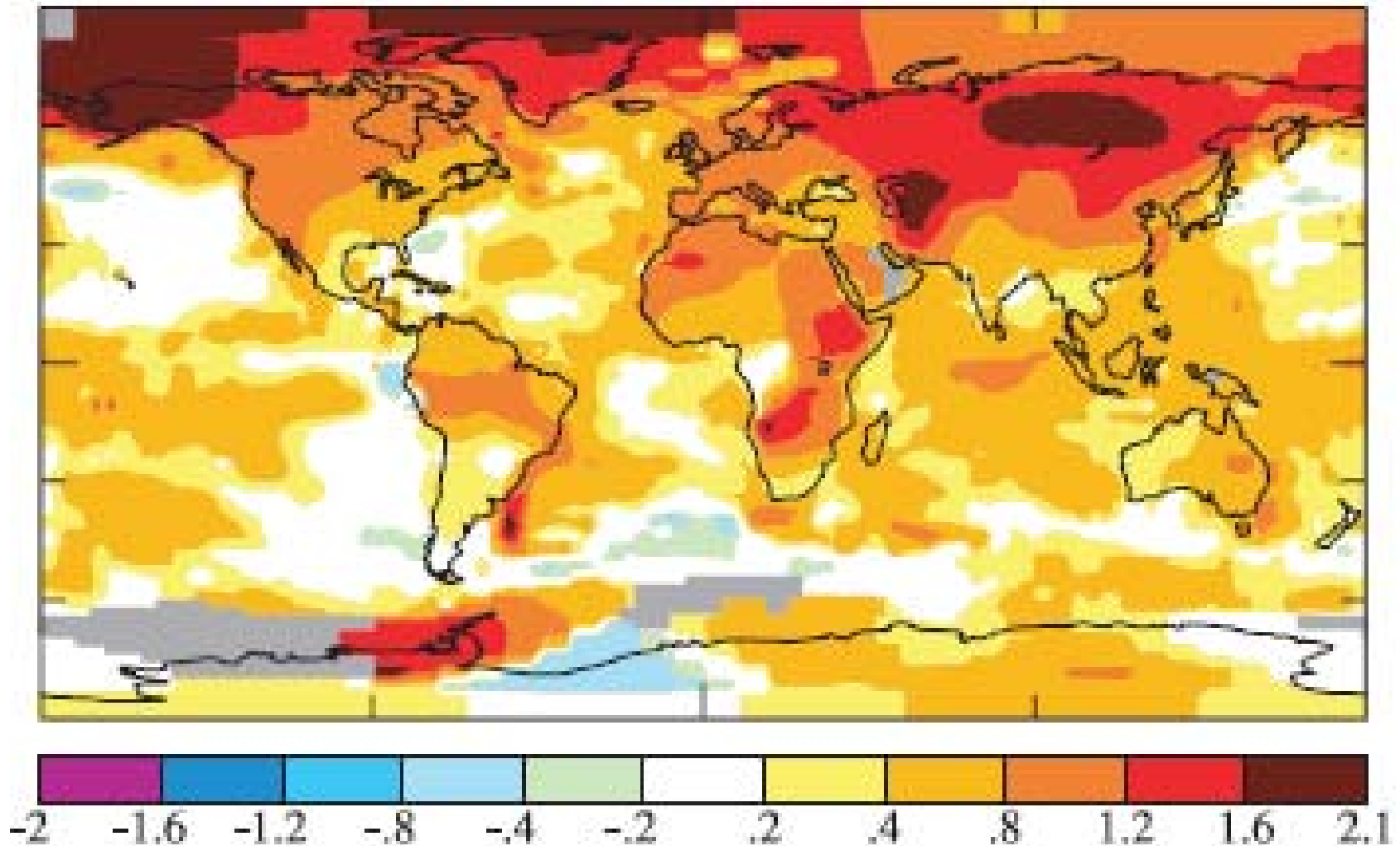
**Warming experiment in a poor fen (MI)**

**II Change in porewater DOC with drainage:**

**Long-term drainage in a poor fen complex (MI)**

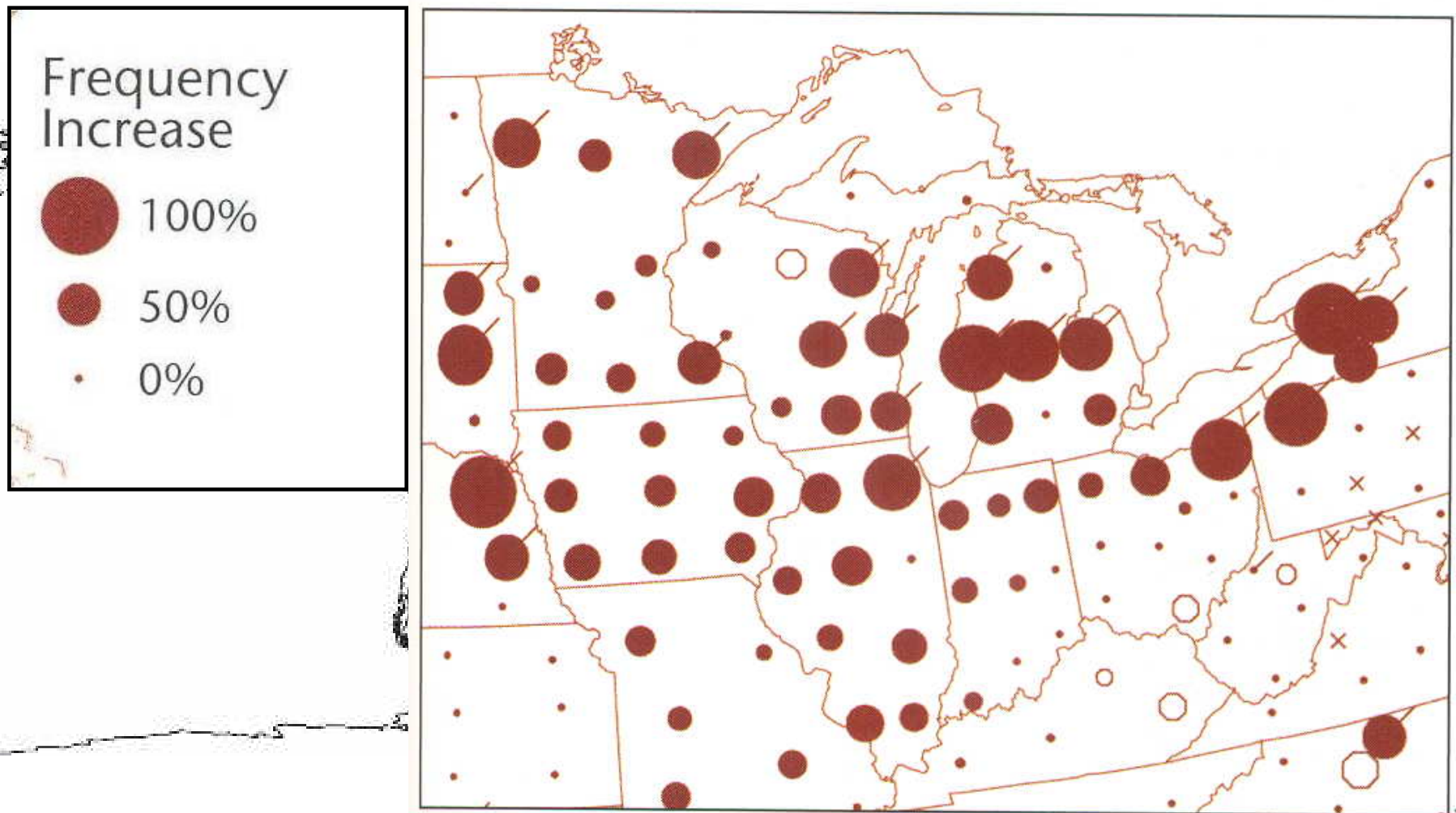
**Experimental drainage in a rich fen (AK)**

# Mean Surface Temperature Anomaly (1951-1980)

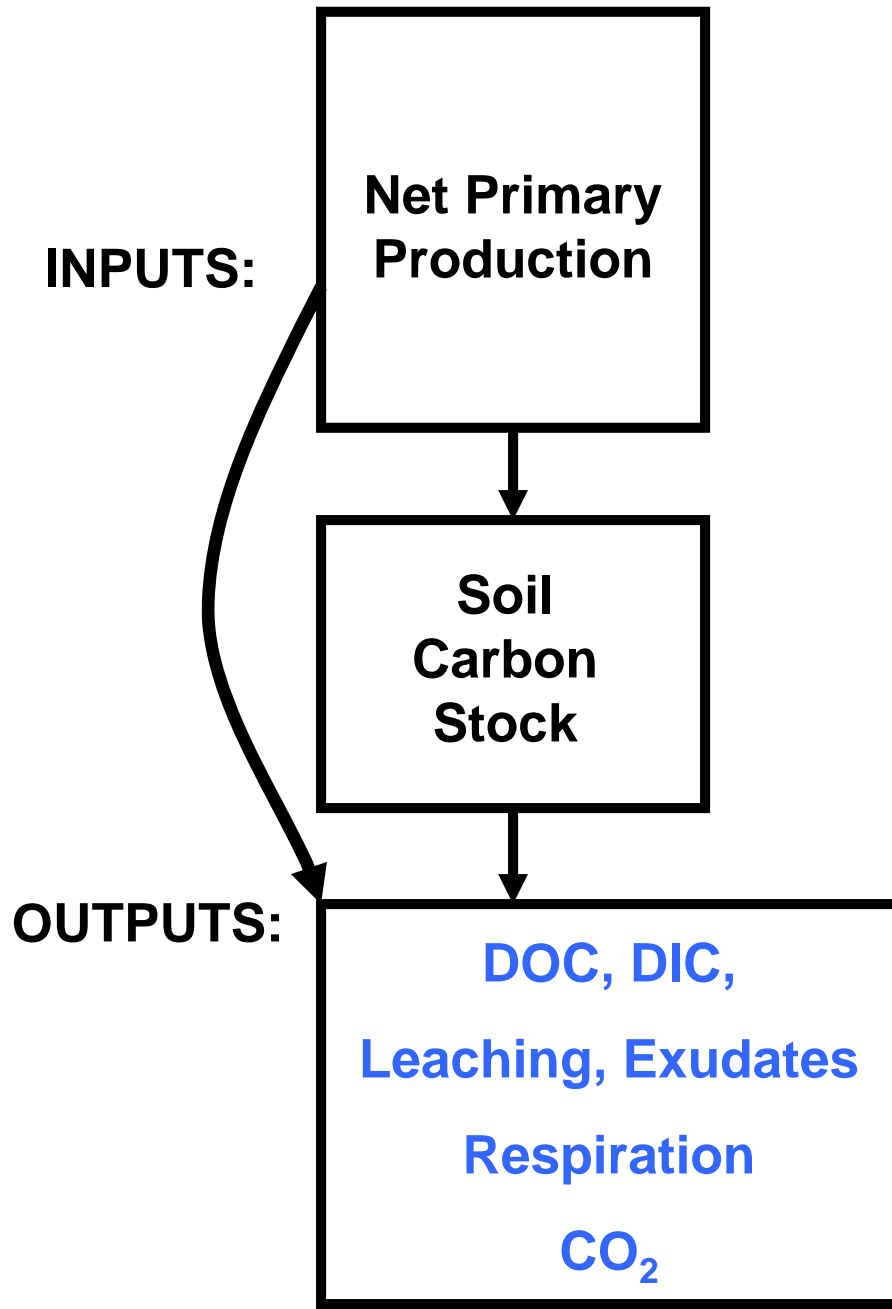


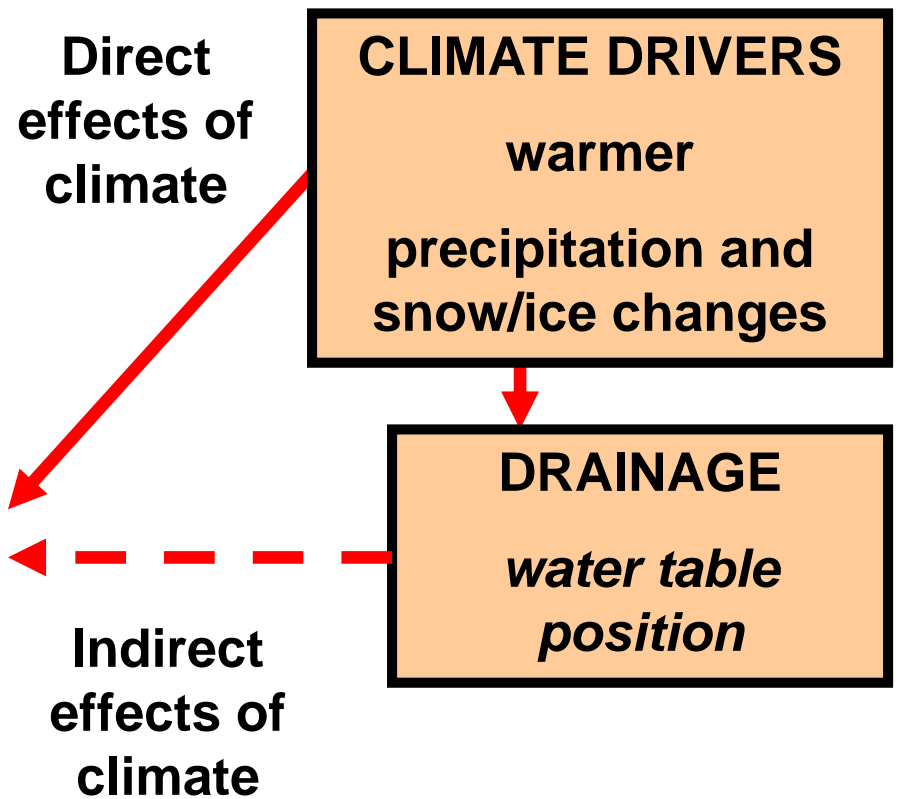
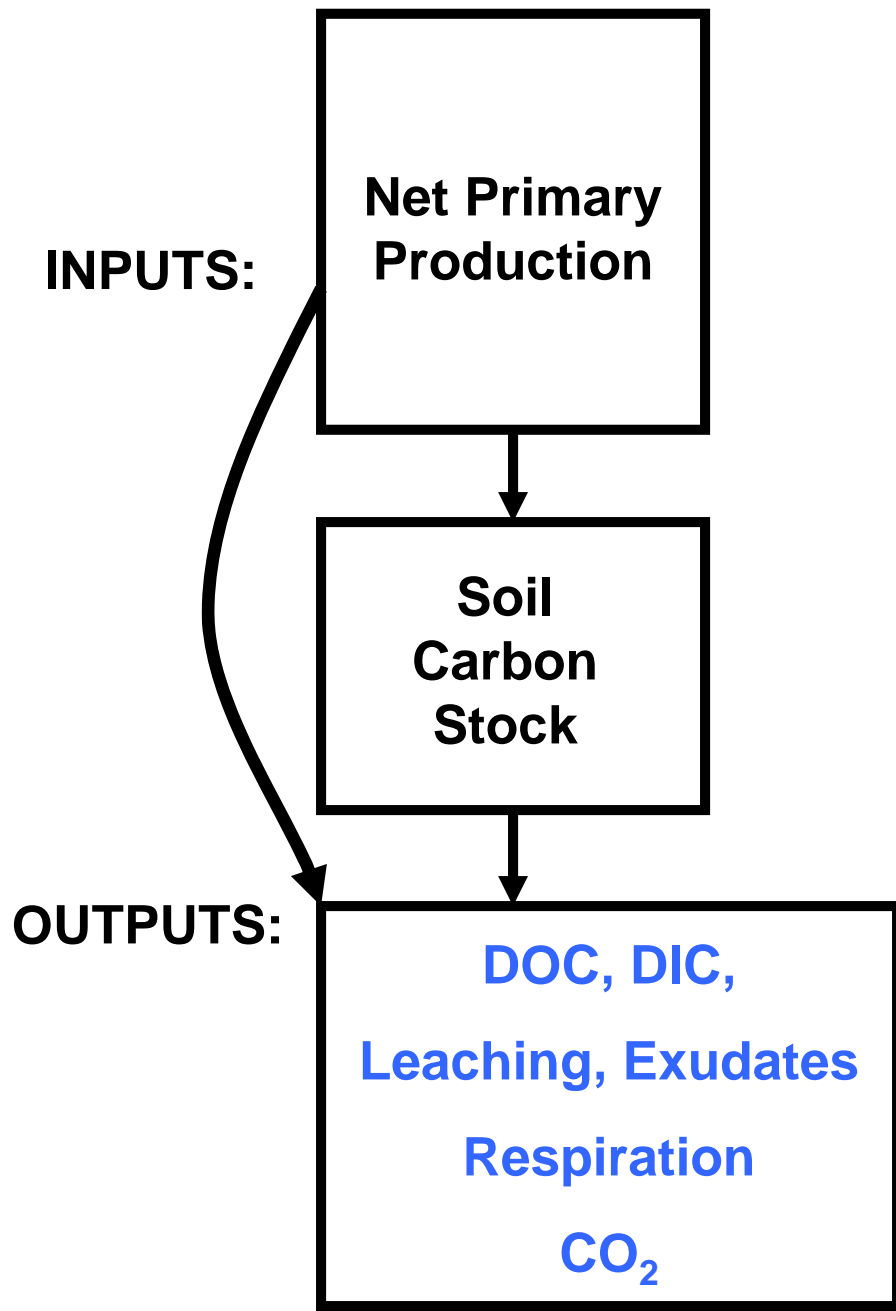
Hansen et al., 2006. *PNAS*

# Changes in extreme precipitation over the last 30 years

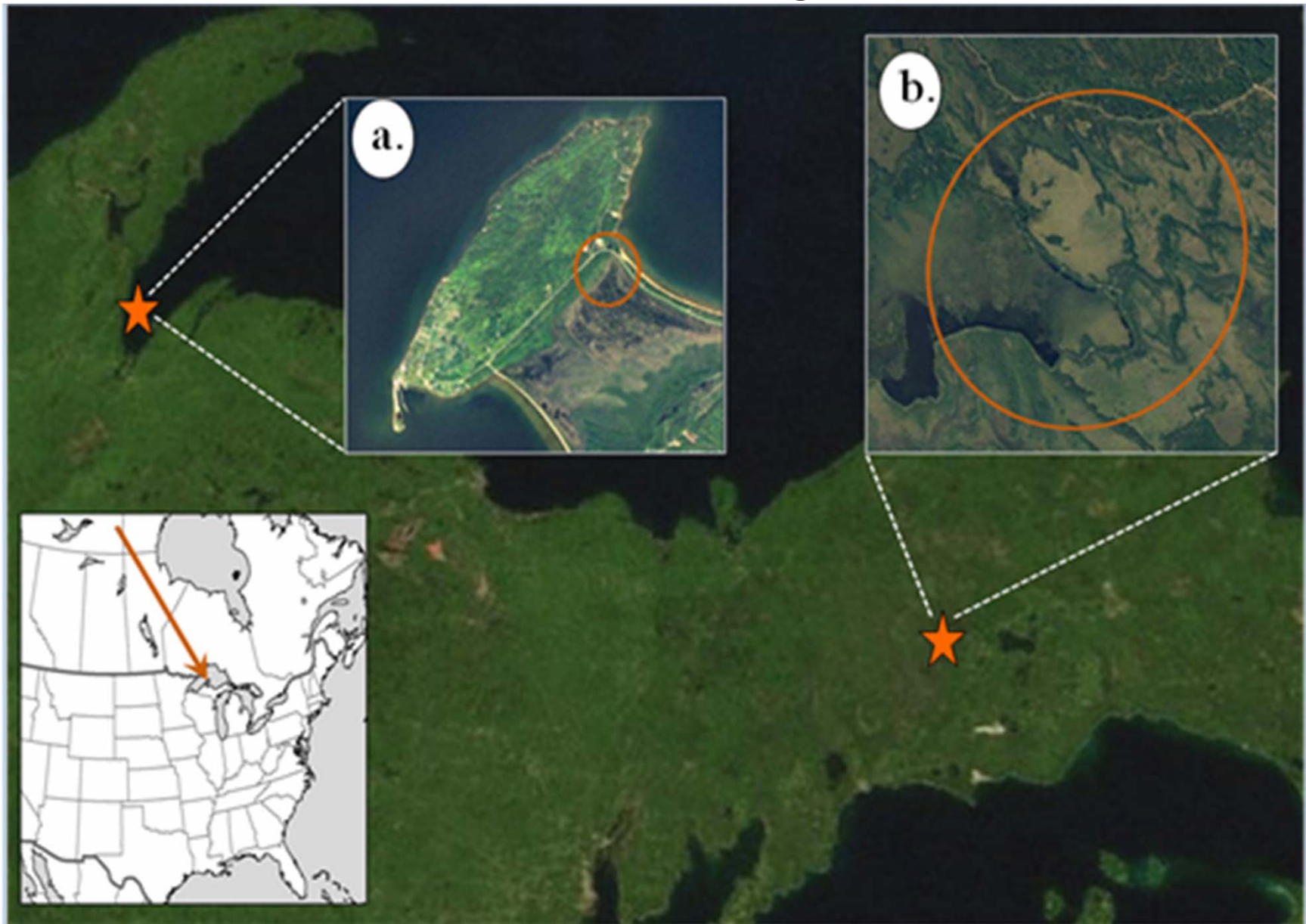


Kunkel et al. 1999, and Groisman et al., 2005. *Journal of Climate*

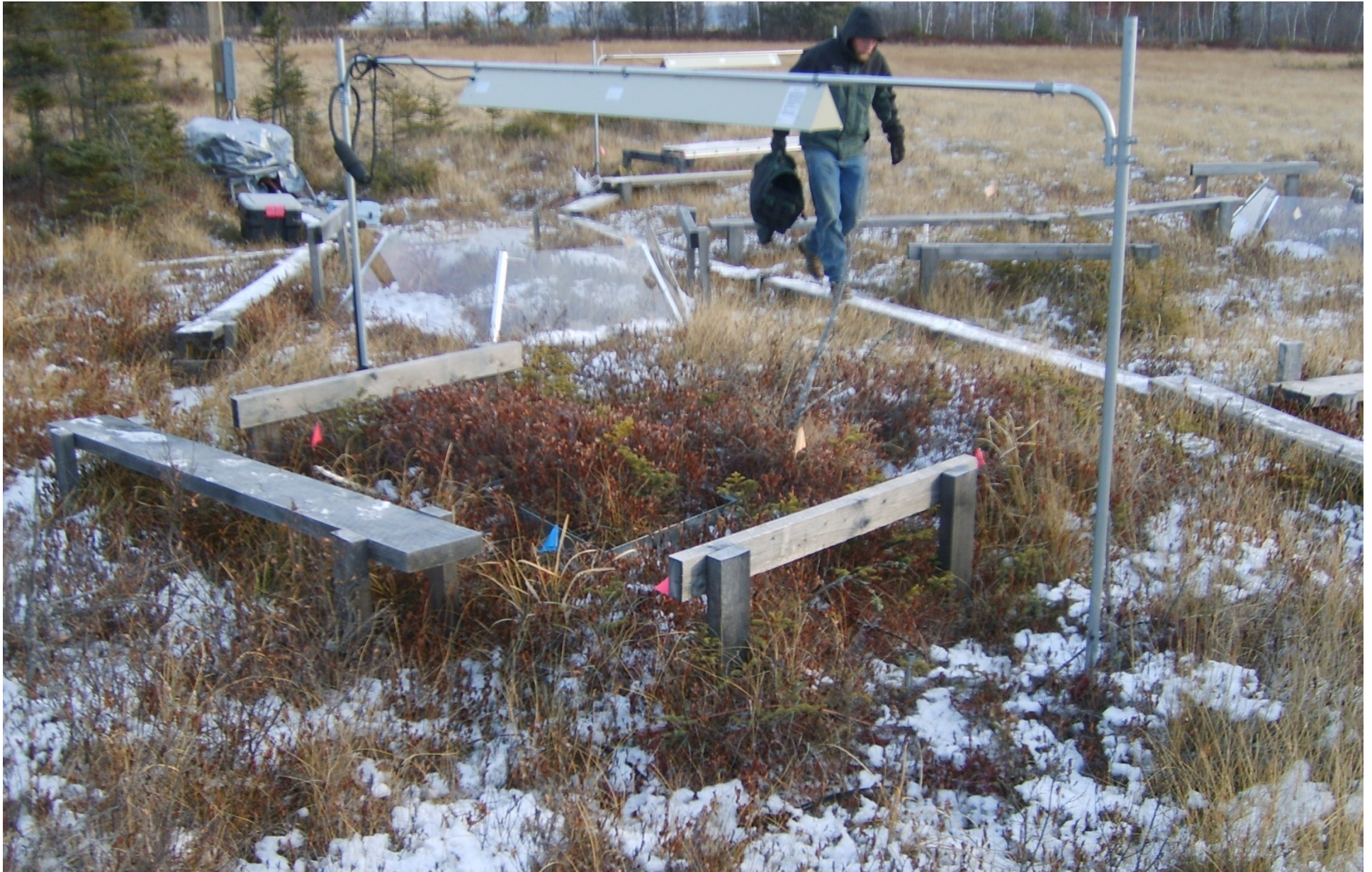




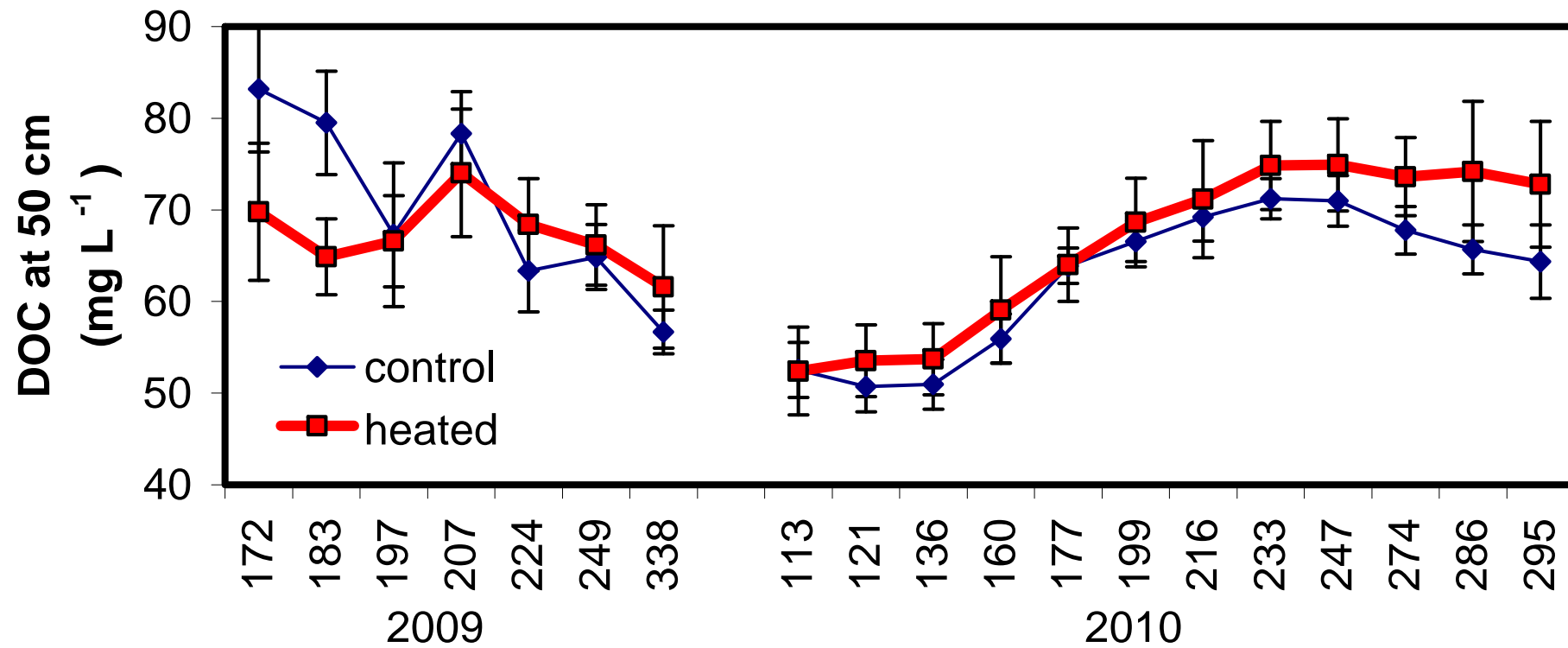
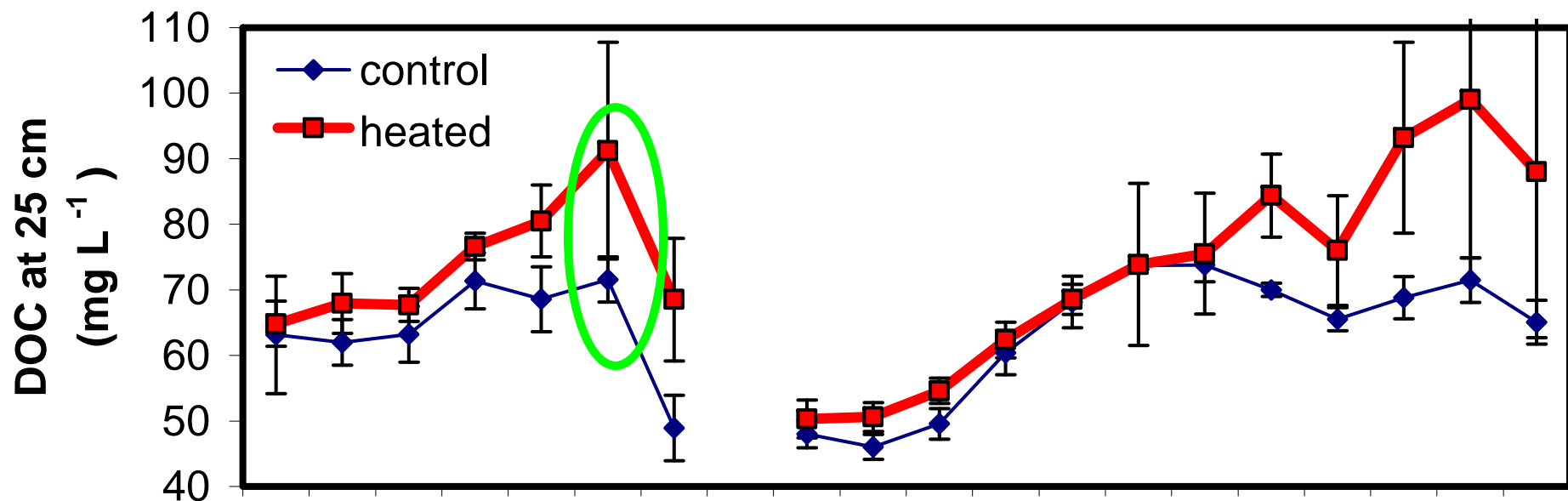
# Change in dissolved organic carbon with warming and drainage

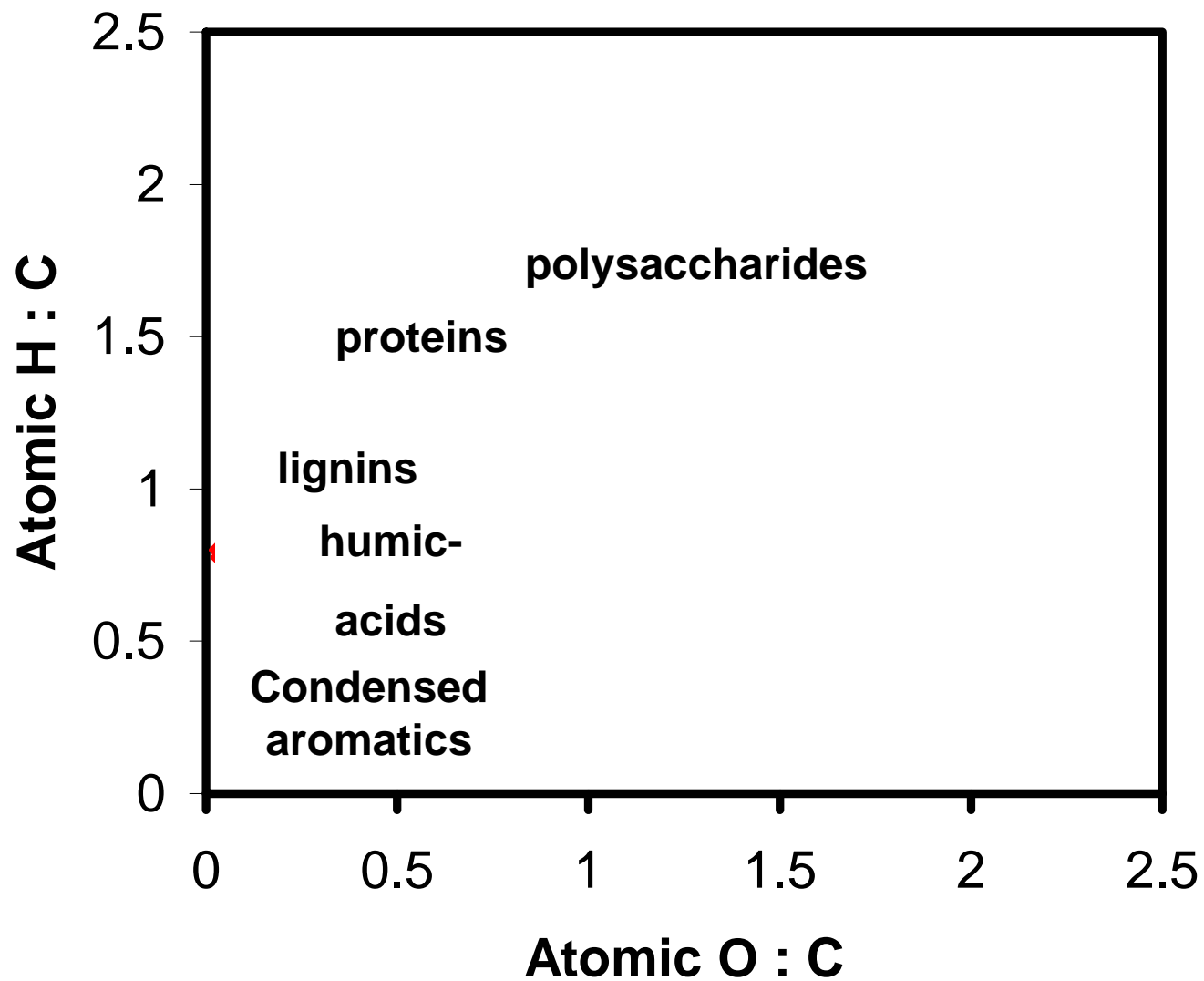




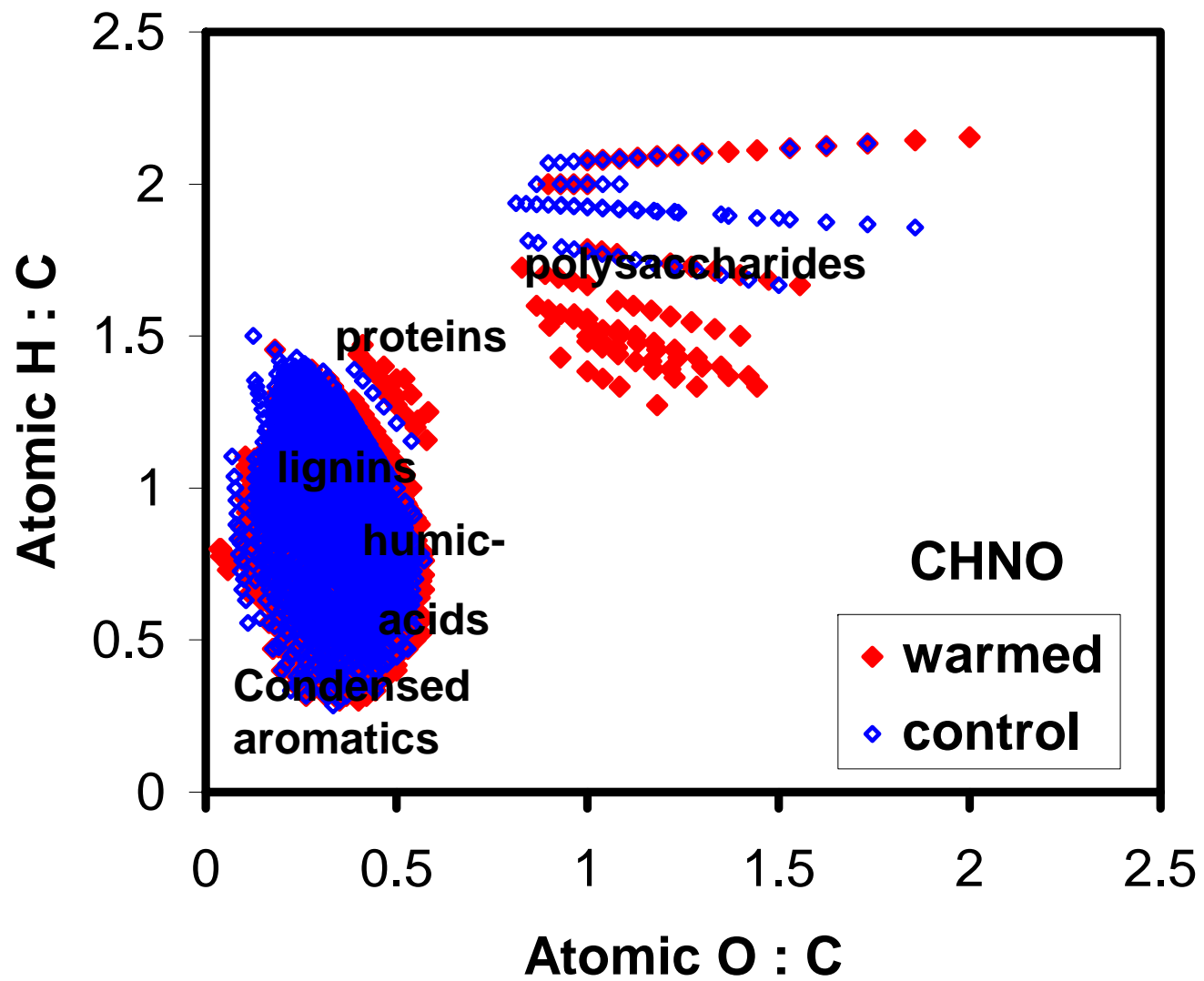


Change in dissolved organic carbon with warming

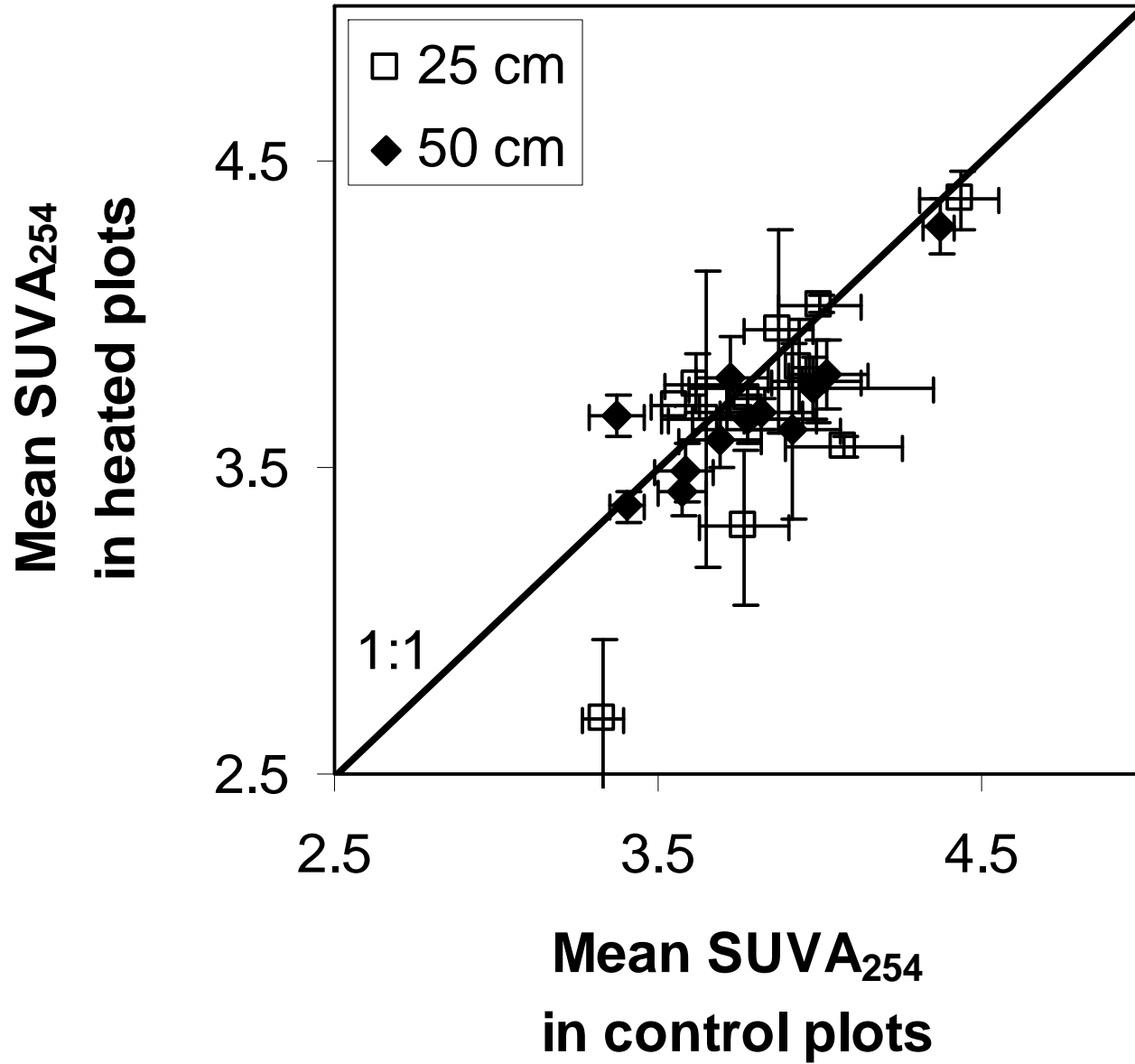




Kane, Mazzoleni, Kratz, Hribljan, Johnson, Pypker, and Chimner. *In prep.*

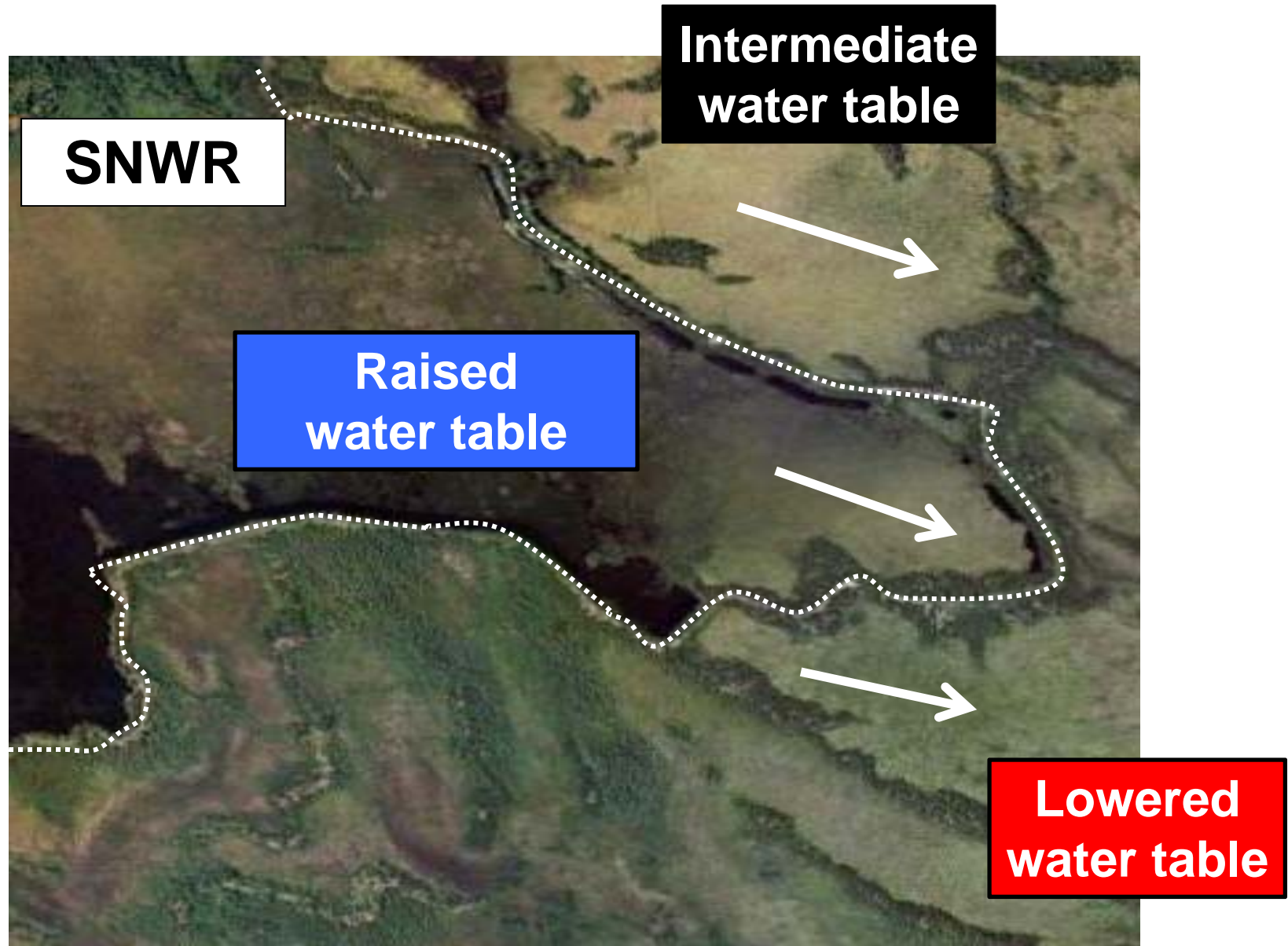


Kane, Mazzoleni, Kratz, Hribljan, Johnson, Pypker, and Chimner. *In prep.*



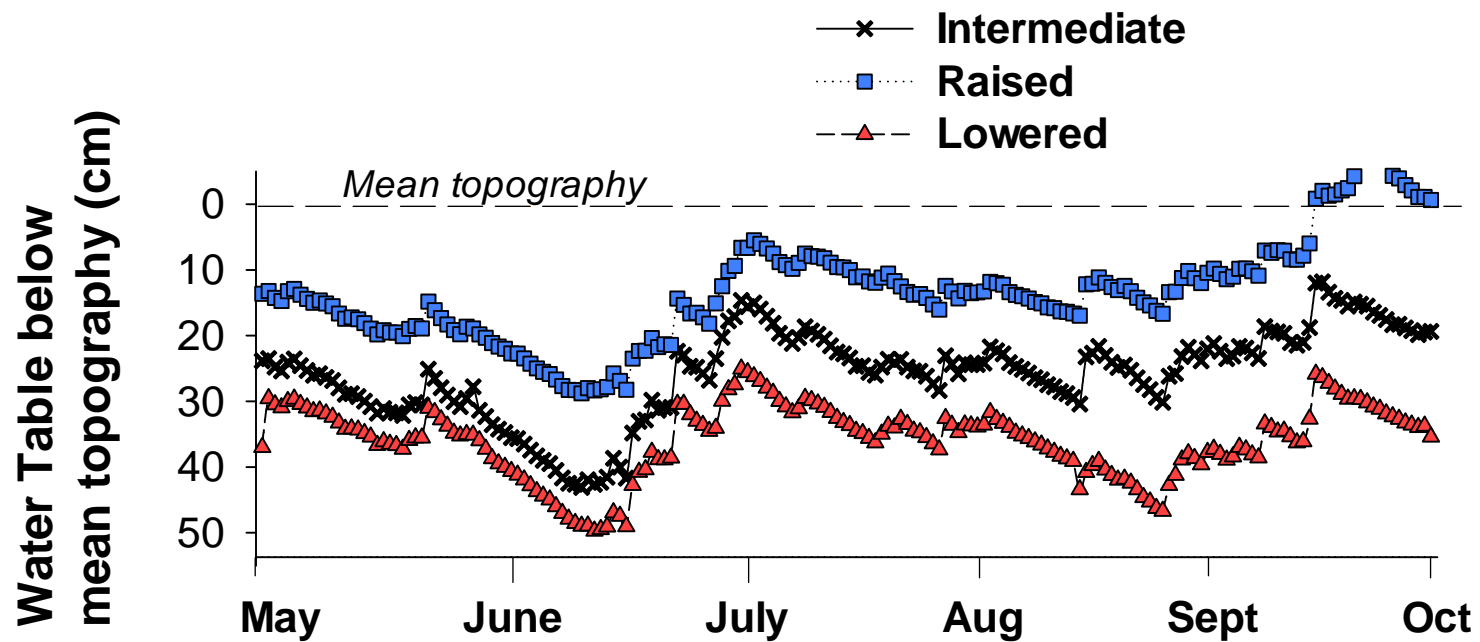
Kane, Mazzoleni, Kratz, Hribljan, Johnson, Pypker, and Chimner. *In prep.*

# Change in DOC with altered hydrology



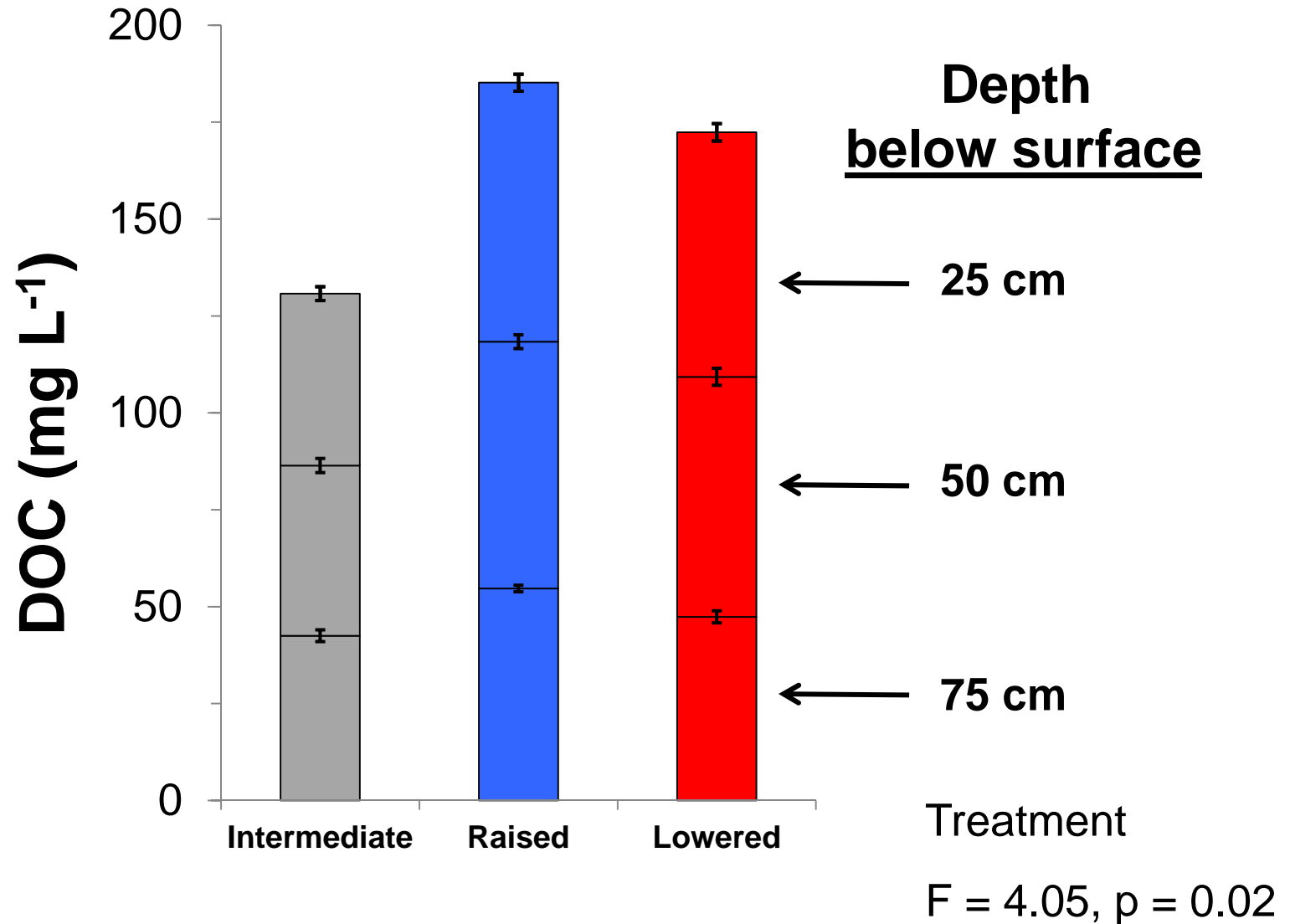
Hribljan, Kane, Turetsky, and Chimner. *In prep.*

# Change in DOC with altered hydrology



Hribljan, Kane, Turetsky, and Chimner. *In prep.*

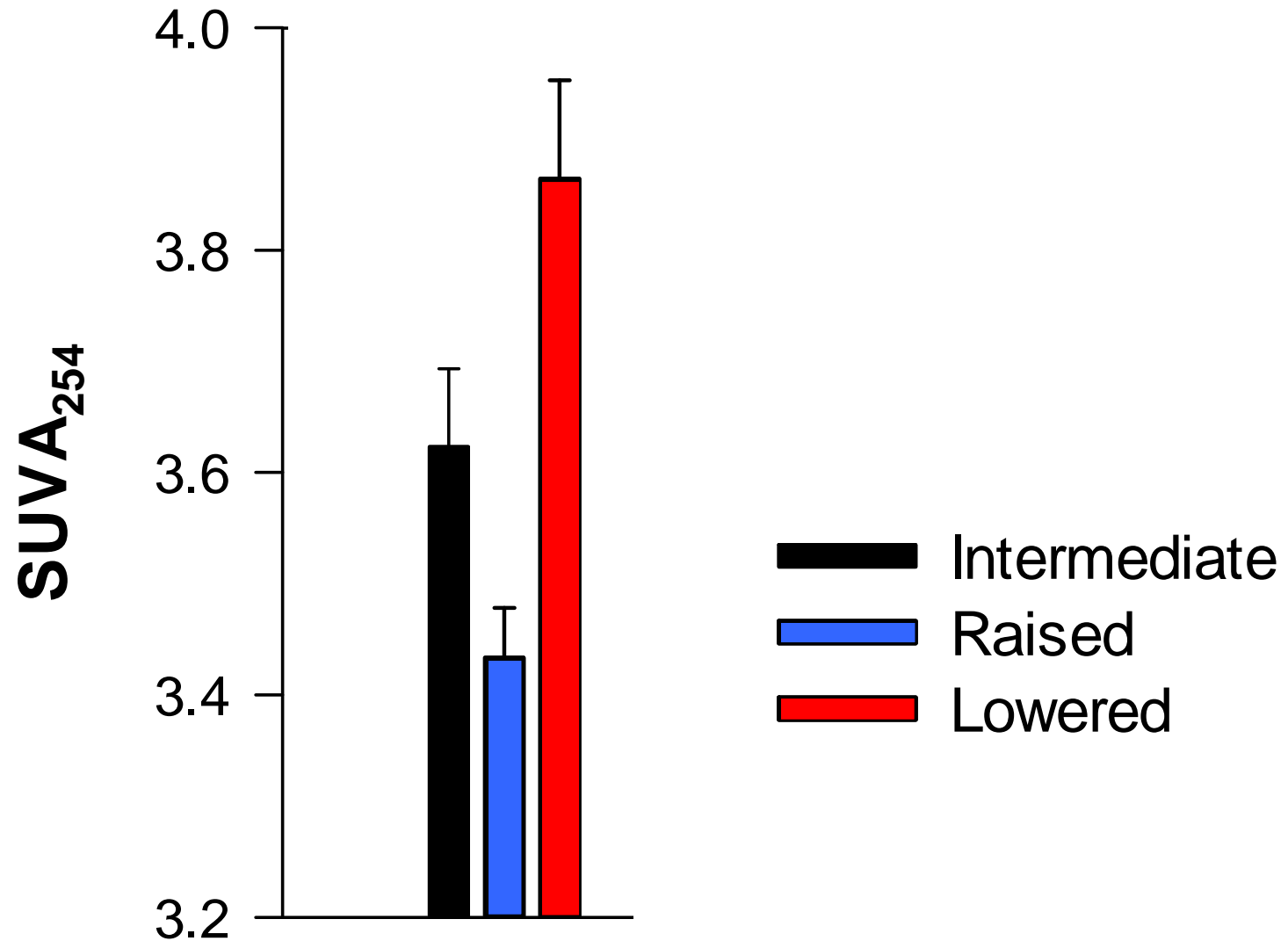
# Change in DOC with altered hydrology



Hribljan, Kane, Turetsky, and Chimner. *In prep.*

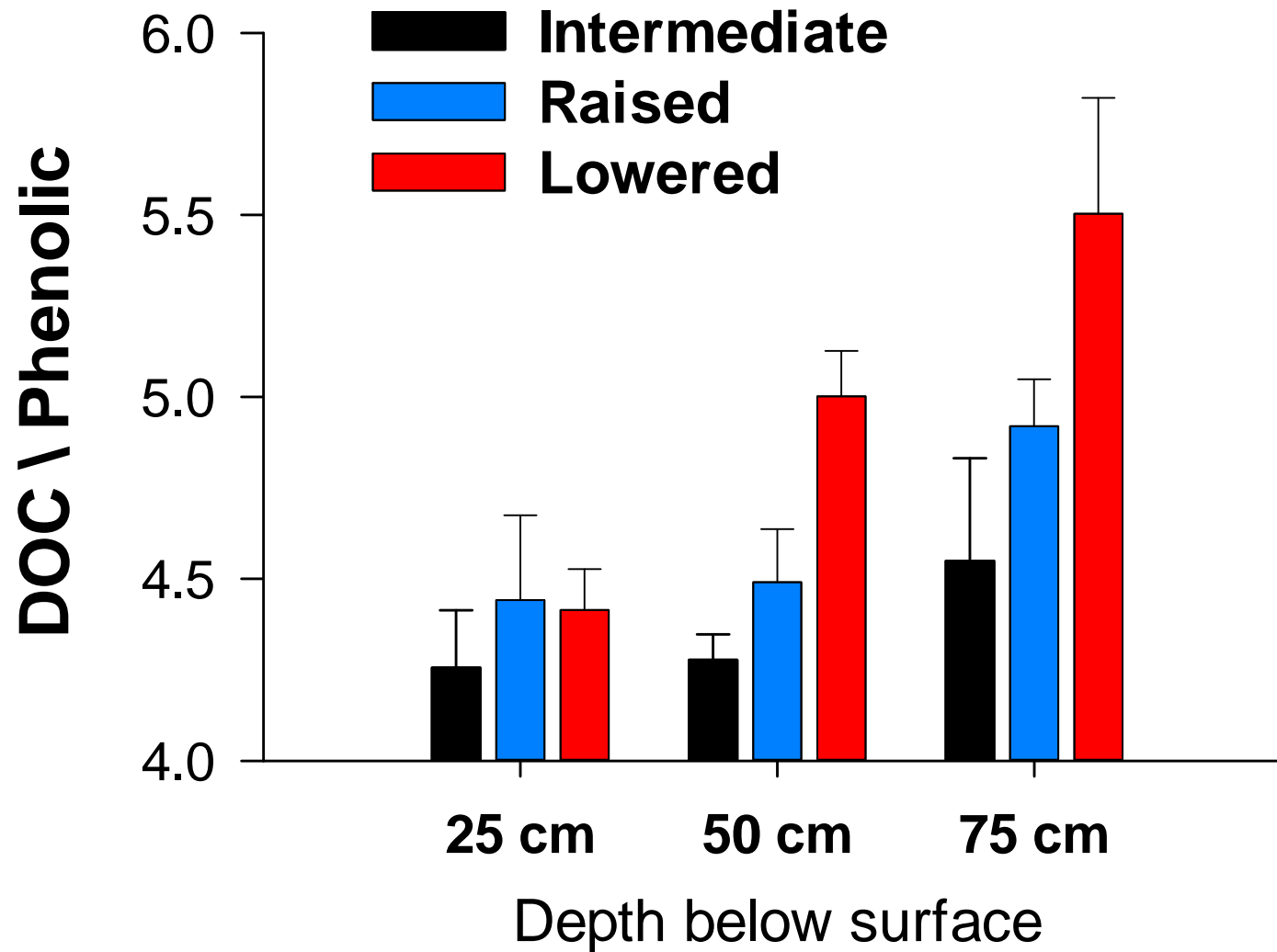


# Change in DOC with altered hydrology



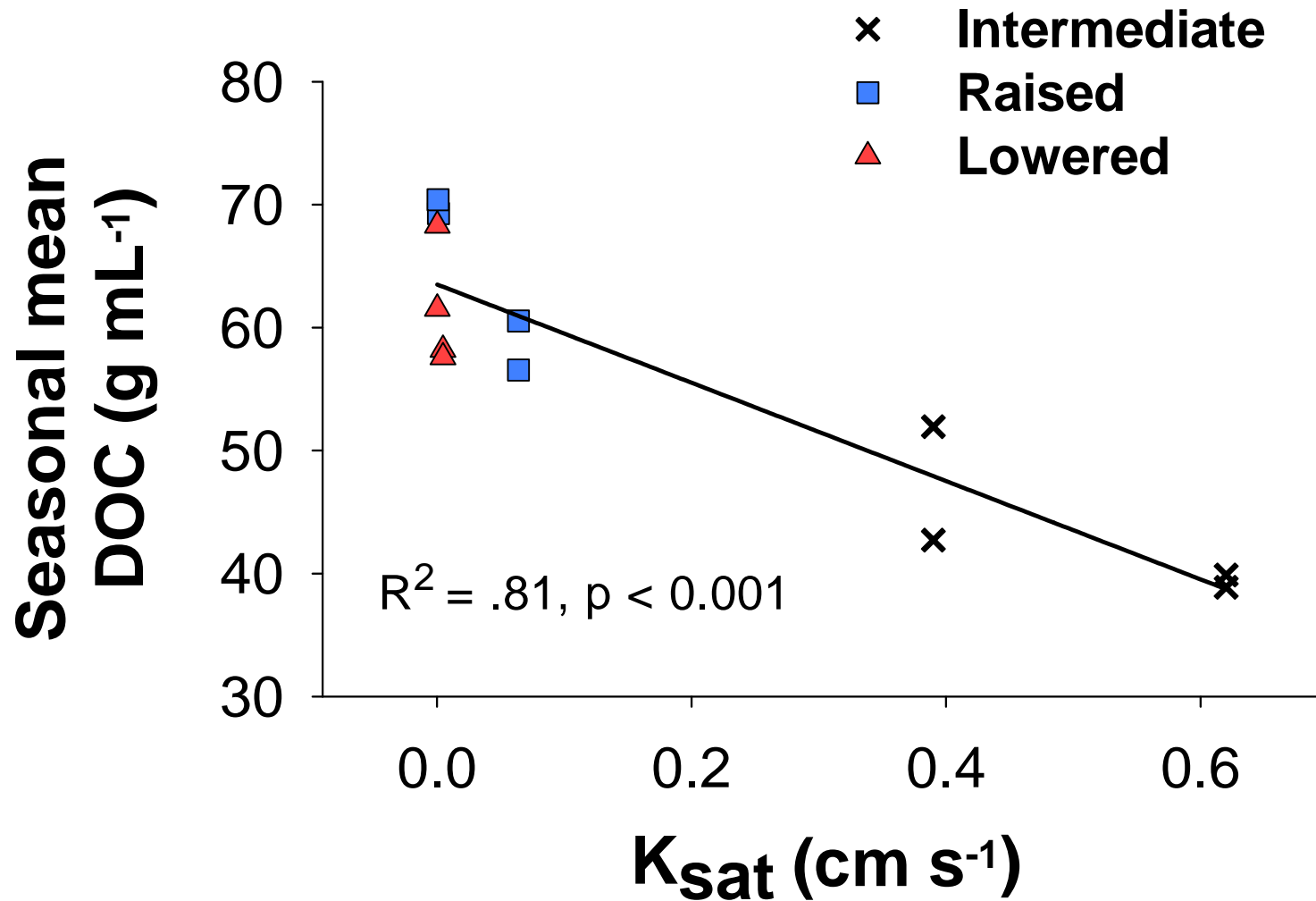
Hribljan, Kane, Turetsky, and Chimner. *In prep.*

# Change in DOC with altered hydrology



Hribljan, Kane, Turetsky, and Chimner. *In prep.*

# Change in DOC with altered hydrology



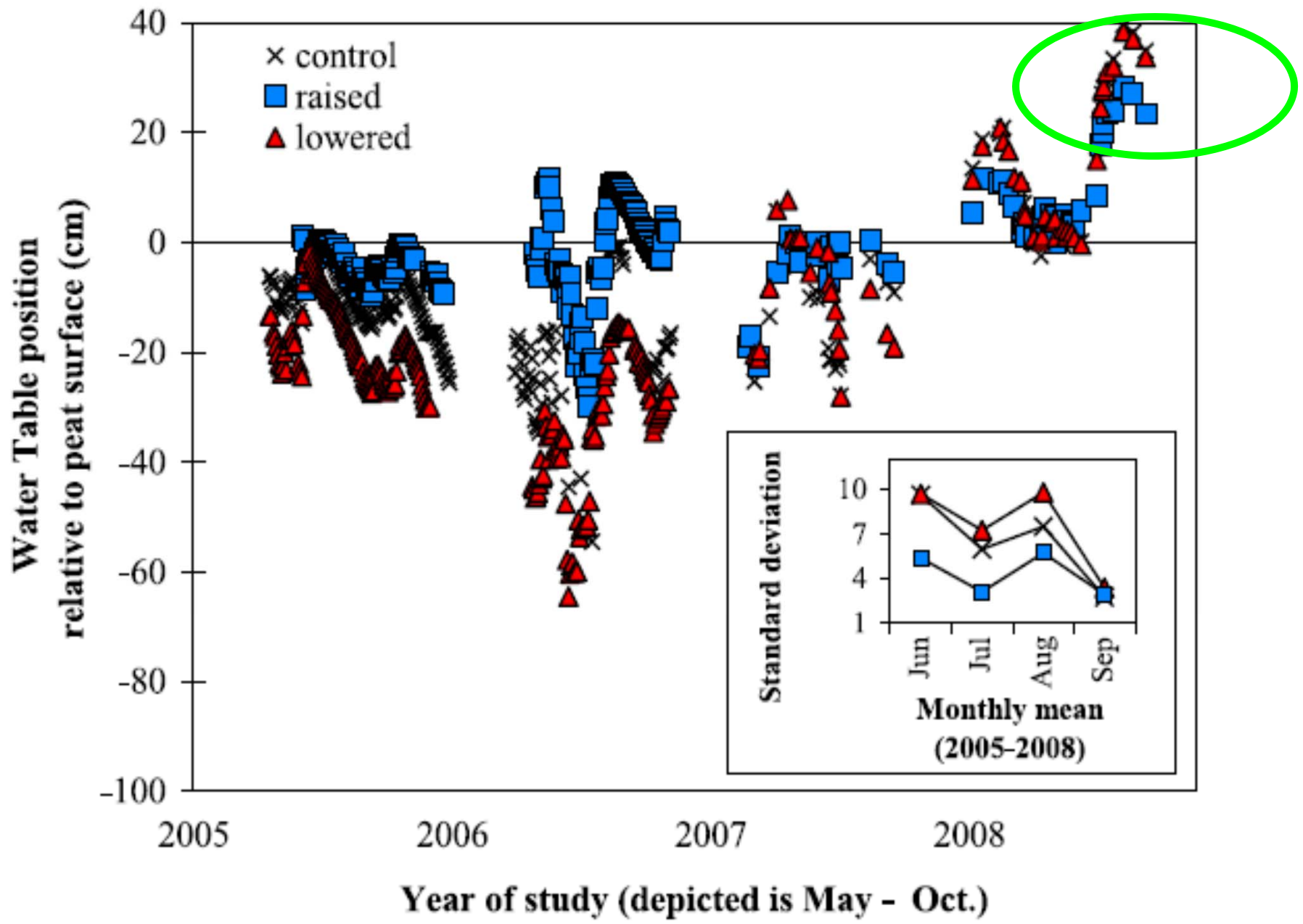
# The Alaska Peatland Experiment (APEX)

Raised

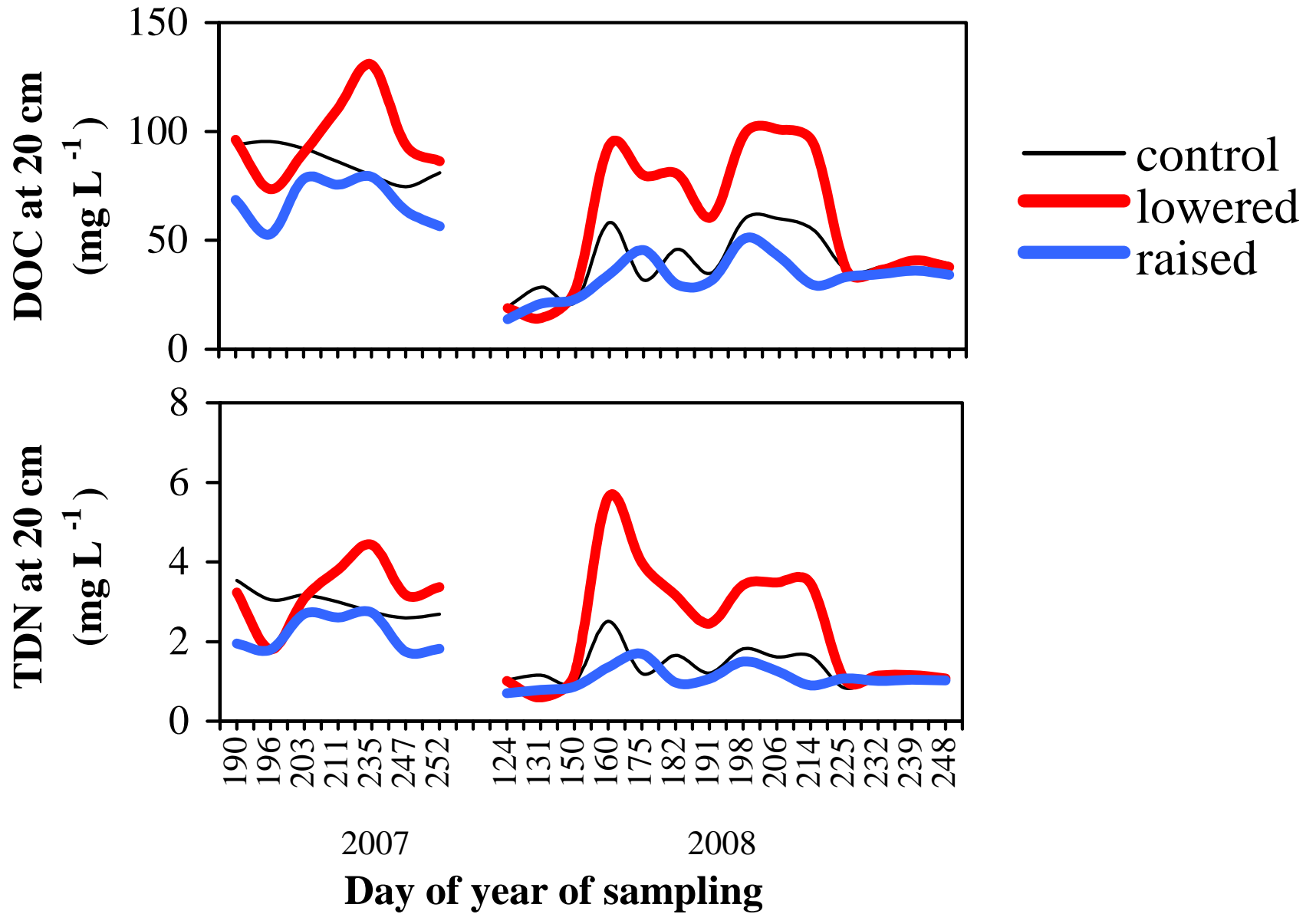
Drained

Control





Kane et al., 2010. *Journal of Geophysical Research-Biogeoscience*

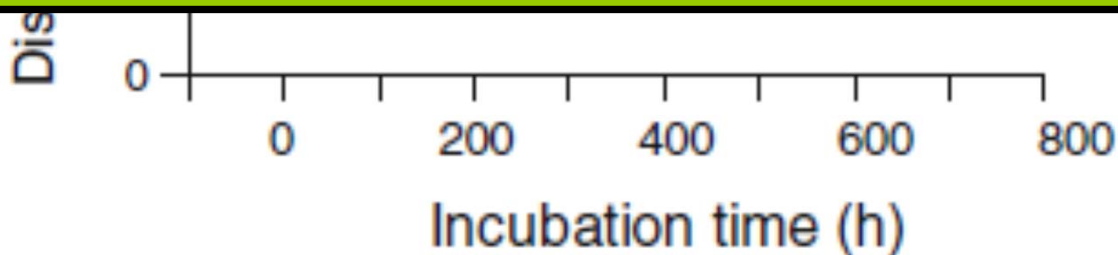


Kane et al., 2010. *Journal of Geophysical Research-Biogeoscience*

# Changes in algal production-

## Consequences for anaerobic metabolism?

- \* Higher DOC concentrations observed with warming.
- \* Higher DOC quality (less aromatic) observed with warming.
- \* Higher DOC concentrations observed in both drained *and* raised water table treatments-
- \* Higher quality DOC with high water table.





**Tanana Flats, AK**



# Thanks!

**MSU Spartans:** Jay Lennon, Molly Conlin, Claire Treat

**UAF Nanooks:** Jon O'Donnell, Dave McGuire, Dave Valentine

**MTU Huskies:** John Hribljan, Lynn Mazzoleni, Carley Kratz, Rod Chimner, Tom Pypker, Mike Falkowski, Amy Marcarelli, Catherine Tarasoff, Oliver Gailing, Karena Schmitt



**Colleagues:** Erik Lilleskov, Lynnette Potvin, Chris Swanston (USFS), Merritt Turetsky (U. Guelph), Eric Kasischke (U. Maryland), Jennifer Harden, Kristen Manies, Dave Krabbenhoft, and Kim Wickland (USGS), Mike Waddington (McMaster U), Bill Hockaday (Baylor U.), Jason Vogel (Texas A&M).



Bonanza Creek LTER  
Center for Water Sciences, MSU  
National Science Foundation  
Department of Energy